

OMV versions and code numbers

This section shows the different versions/configuration codes and the ordering numbers.

- Section [OMV technical data](#) on page 40, specify the technical data for OMV for each shaft type.
- In section [OMV function diagrams](#) on page 45, the diagram for each motor size is shown.
- See [OMV dimensions](#) on page 53 for outer main dimensions for the different OMV motor types.

OMV versions and code numbers

OMV standard motors

Mounting flange: Standard 4 hole flange

Spigot diameter	Ø160 mm [6.30 in]						
Bolt circle diameter	Ø200 mm [7.89 in]						
Shaft	Main Port size	Drain Port size	Check valve	European version	US version	Main type designation	Conf. code
Cyl. Ø50 mm	G 1	G 1/4	Yes	Yes	-	OMV	A1
Splined 2.125 in	G 1	G 1/4	Yes	Yes	-	OMV	A2
Tapered 60 mm	G 1	G 1/4	Yes	Yes	-	OMV	A3
Cyl. 2.25 in	1 5/16-12 UN	9/16-18 UNF	Yes	-	Yes	OMV	A4
Splined 2.125 in	1 5/16-12 UN	9/16-18 UNF	Yes	-	Yes	OMV	A5
Tapered 2.25 in	1 5/16-12 UN	9/16-18 UNF	Yes	-	Yes	OMV	A6

Code numbers OMV Standard 4 hole flange

Conf. code	Displacement				
	315	400	500	630	800
A1	151B3100	151B3101	151B3102	151B3103	151B3104
A2	151B3105	151B3106	151B3107	151B3108	151B3109
A3	151B3110	151B3111	151B3112	151B3113	151B3114
A4	151B2150	151B2151	151B2152	151B2153	151B2154
A5	151B2155	151B2156	151B2157	151B2158	151B2159
A6	151B2160	151B2161	151B2162	151B2163	151B2164

Mounting flange: OMV SAE-C flange

Spigot diameter	Ø127 mm [5.00 in]						
Bolt circle diameter	Ø161.9 mm [6.37 in]						
Shaft	Main Port size	Drain Port size	European version	US version	Check valve	Main type designation	Conf. code
Cyl. 2.25 in	1 5/16-12 UN	9/16-18 UNF	-	Yes	Yes	OMV	B1
Splined 2.125 in	1 5/16-12 UN	9/16-18 UNF	-	Yes	Yes	OMV	B2

Code numbers OMV - SAE-C flange

Conf. code	Displacement				
	315	400	500	630	800
B1	151B2183	151B2184	151B2185	151B2186	151B2187
B2	151B2188	151B2189	151B2190	151B2191	151B2192

OMV versions and code numbers

Mounting flange: OMV Wheel

Spigot diameter	Ø180 mm [7.09 in]						
Bolt circle diameter	Ø224 mm [8.82 in]						
Shaft	Main Port size	Drain Port size	Check valve	European version	US version	Main type designation	Conf. code
Cyl. Ø50 mm	G 1	G 1/4	Yes	Yes	-	OMVW	C1
Splined 2.125 in	G 1	G 1/4	Yes	Yes	-	OMVW	C2
Tapered 2.25 in	1 5/16-12 UN	9/16-18 UNF	Yes	-	Yes	OMVW	C3

Code numbers OMVW

Conf. code	Displacement				
	315	400	500	630	800
C1	151B3115	151B3116	151B3117	151B3118	151B3119
C2	151B3120	151B3121	151B3122	151B3123	151B3124
C3	151B2170	151B2171	151B2172	151B2173	151B2174

Mounting flange: OMV Short

Spigot diameter	Ø140 mm [5.51 in]						
Bolt circle diameter	Ø180 mm [7.09 in]						
Shaft	Main Port size	Drain Port size	Check valve	European version	US version	Main type designation	Conf. code
No output shaft	G 1	G 1/4	Yes	Yes	-	OMVS	D1

Code numbers OMVS

Conf. code	Displacement				
	315	400	500	630	800
D1	151B3125	151B3126	151B3127	151B3128	151B3129

OMV features

Features available (options):

- Speed sensor
- Motor with tacho connection
- Viton shaft seal
- Painted
- Ultra short

OMV technical data

OMV, OMVW, OMVS technical data

Type		OMV OMVW OMVS	OMV OMVW OMVS	OMV OMVW OMVS	OMV OMVW OMVS	OMV OMVW OMVS
Motor size		315	400	500	630	800
Geometric displacement	cm ³ [in ³]	314.5 [19.19]	400.9 [24.46]	499.6 [30.49]	629.1 [38.39]	801.8 [48.93]
Maximum speed	min ⁻¹ [rpm]	cont.	510	500	400	315
		int. ¹⁾	630	600	480	380
Maximum torque	N·m [lbf·in]	cont.	920 [8140]	1180 [10440]	1460 [12920]	1660 [14690]
		int. ¹⁾	1110 [9820]	1410 [12480]	1760 [15580]	1940 [17170]
Maximum output	kW [hp]	cont.	42.5 [57.0]	53.5 [71.7]	53.5 [71.7]	48.0 [64.4]
		int. ¹⁾	51.0 [68.4]	64.0 [85.8]	64.0 [85.8]	56.0 [75.1]
Maximum pressure drop	bar [psi]	cont.	200 [2900]	200 [2900]	200 [2900]	180 [2610]
		int. ¹⁾	240 [3480]	240 [3480]	240 [3480]	210 [3050]
		peak ²⁾	280 [4060]	280 [4060]	280 [4060]	240 [3480]
Maximum oil flow	l/min [USgal/ min]	cont.	160 [42.3]	200 [52.8]	200 [52.8]	200 [52.8]
		int. ¹⁾	200 [52.8]	240 [63.4]	240 [63.4]	240 [63.4]
Maximum starting pressure with unloaded shaft	bar [psi]	8 [116]	8 [116]	8 [116]	8 [116]	8 [116]
Minimum starting torque	at max. press. drop cont. N·m [lbf·in]	710 [6280]	910 [8050]	1130 [10000]	1330 [11770]	1510 [13360]
	at max. press. drop int. ¹⁾ N·m [lbf·in]	850 [7520]	1090 [9650]	1360 [12040]	1550 [13720]	1700 [15050]

¹⁾ Intermittent operation: the permissible values may occur for max. 10% of every minute.

²⁾ Peak load: The permissible values may occur for max. 1% of every minute.

Type			Maximum inlet pressure	Maximum return pressure with drain line
OMV OMVW OMVS	bar [psi]	cont.	210 [3050]	140 [2030]
	bar [psi]	int. ¹⁾	250 [3630]	175 [2540]
	bar [psi]	peak ²⁾	300 [4350]	210 [3050]

¹⁾ Intermittent operation: the permissible values may occur for max. 10% of every minute.

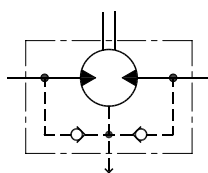
²⁾ Peak load: The permissible values may occur for max. 1% of every minute.

[For maximum permissible combination of flow and pressure, see OMV function diagrams on page 45 for actual motor.](#)

Maximum permissible shaft seal pressure

Motor with check valves and without use of drain connection

The pressure on the shaft seal never exceeds the pressure in the return line.



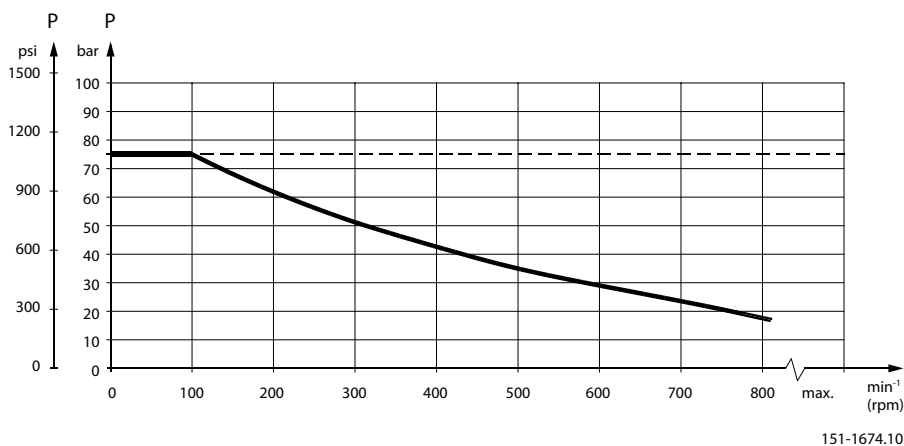
151-320.10

OMV technical data

Motor with check valves and with drain connection

The shaft seal pressure equals the pressure on the drain line.

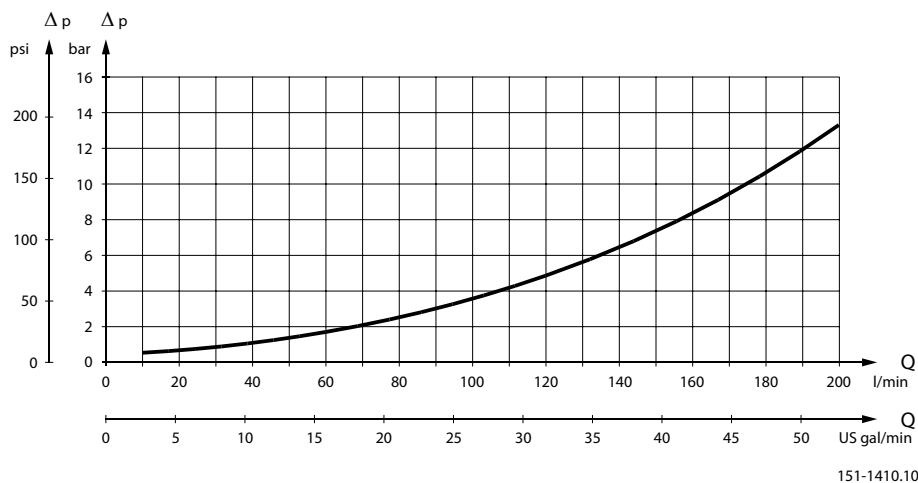
Maximum return pressure without drain line or maximum pressure in the drain line



--- Intermittent operation: the permissible values may occur for max. 10% of every minute.

— Continuous operation

Pressure drop in motor



The curve applies to an unloaded motor shaft and an oil viscosity of 35 mm²/s [165 SUS]

Oil flow in drain line

Maximum oil flow in the drain line at a return pressure less than 5-10 bar [75-150 psi]

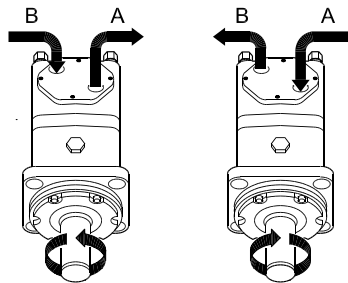
Pressure drop		Viscosity		Oil flow in drain line	
bar	[psi]	mm ² /s	[SUS]	l/min	[US gal/min]
140	[2030]	20	[100]	3.0	[0.79]
		35	[165]	2.0	[0.53]

OMV technical data

Maximum oil flow in the drain line at a return pressure less than 5-10 bar [75-150 psi] (continued)

Pressure drop		Viscosity		Oil flow in drain line	
bar	[psi]	mm ² /s	[SUS]	l/min	[US gal/min]
210	[3050]	20	[100]	6.0	[1.59]
		35	[165]	4.0	[1.06]

Direction of shaft rotation



151-394.10

Permissible shaft loads

Shaft load and bearing life time

The output shaft runs in tapered roller bearings that permit high axial and radial forces.

The permissible radial load on the shaft is shown for an axial load of 0 N as a function of the distance from the mounting flange to the point of load application.

The curve is based on B10 bearing life (2000 hours or 12,000,000 shaft revolutions at 100 min⁻¹) at rated output torque, when mineral-based hydraulic oil with a sufficient content of anti-wear additives, is used.

For 3,000,000 shaft revolutions or 500 hours – increase these shaft loads with 52%.

The dash curve shows maximum radial shaft load. Any shaft load exceeding the values shown in the curve will involve a risk of breakage.

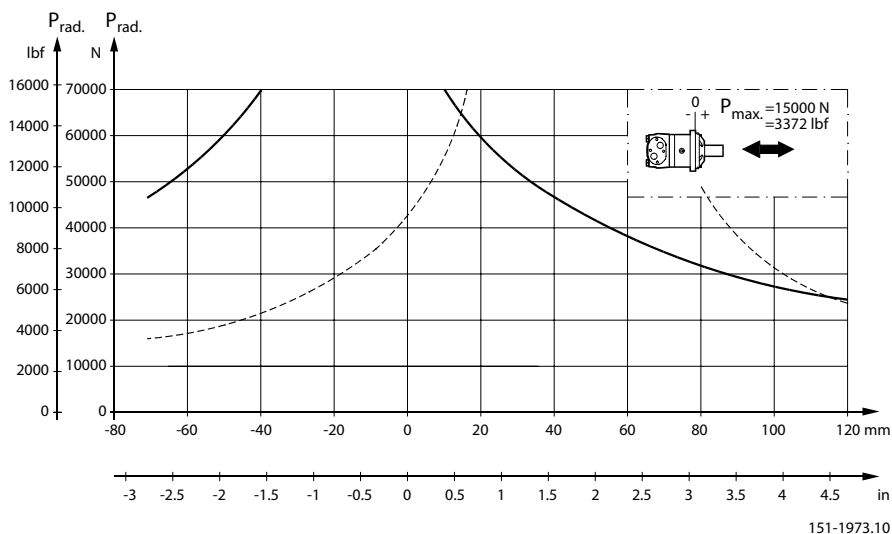
Bearing life calculations can be made using the explanation and formula provided in the chapter *Bearing dimensioning* in the technical information *General Orbital Motors*, **BC152886483554**.

OMV mounting flange: Standard

Shaft:

All shaft types

OMV technical data

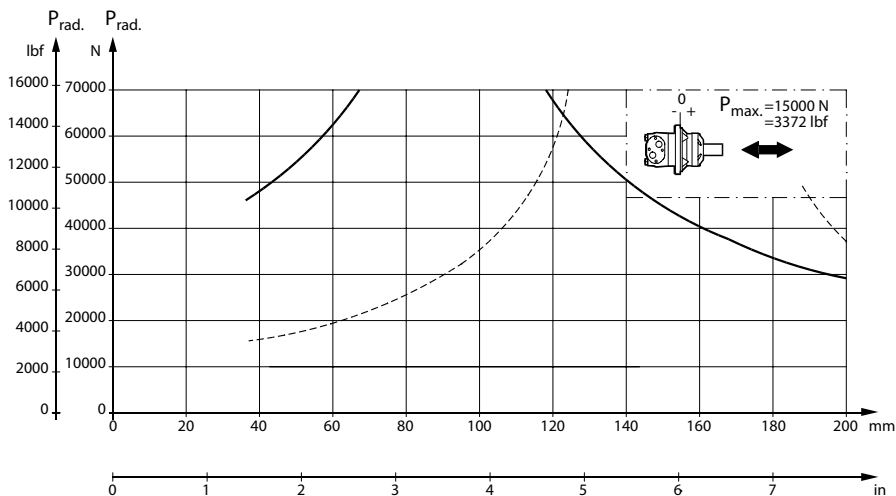


151-1973.10

OMV mounting flange: Wheel

Shaft:

All shaft types



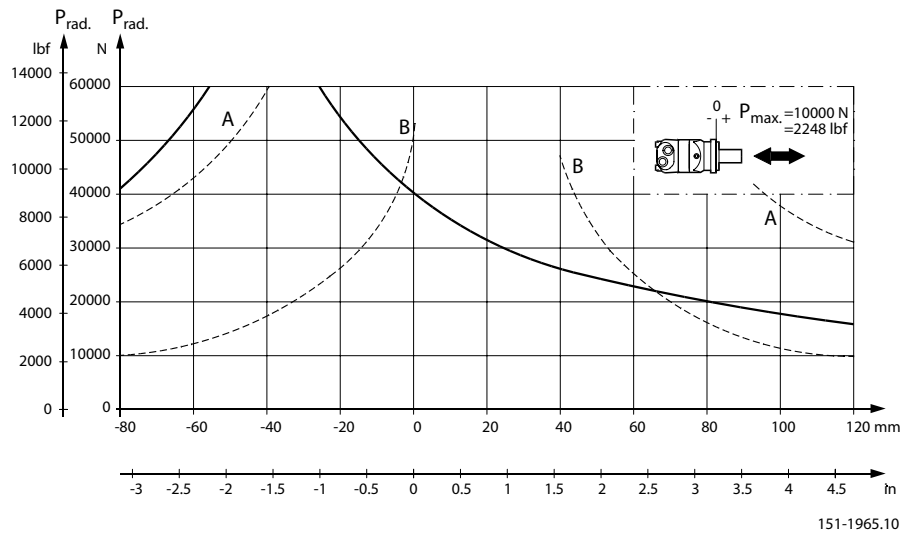
151-1969.10

OMV mounting flange: SAE-C

Shaft:

All shaft types

OMV technical data



- A:** Cyl. 2.25 in shaft
- B:** Splined 2.125 in shaft

OMV function diagrams

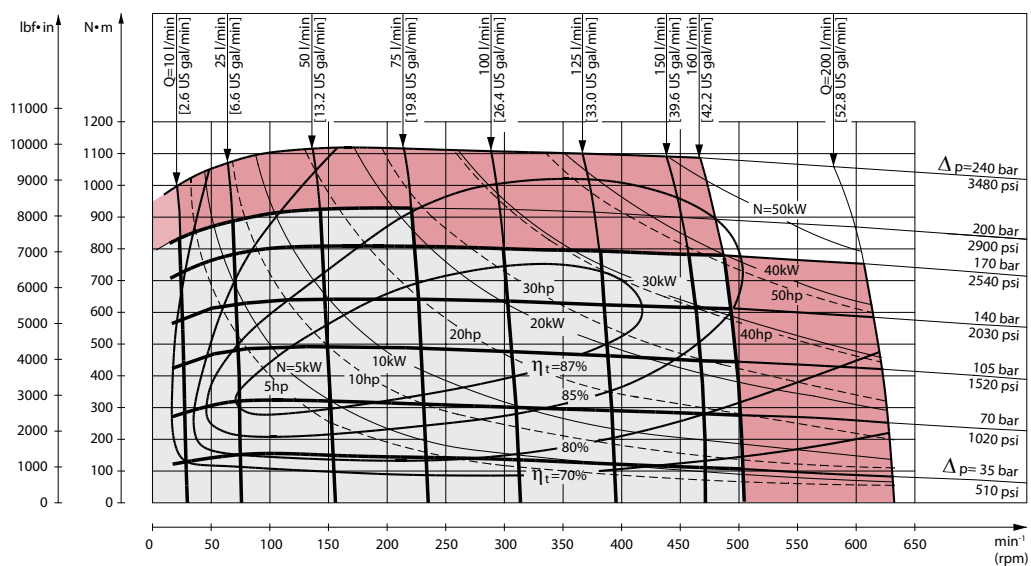
Explanation of function diagram use, basis and conditions can be found in [Speed, torque, and output](#) on page 7.

- Continuous range
- Intermittent range (max. 10% operation every minute)

Maximum permissible continuous/intermittent pressure drop for the actual shaft version can be found in [OMV technical data](#) on page 40.

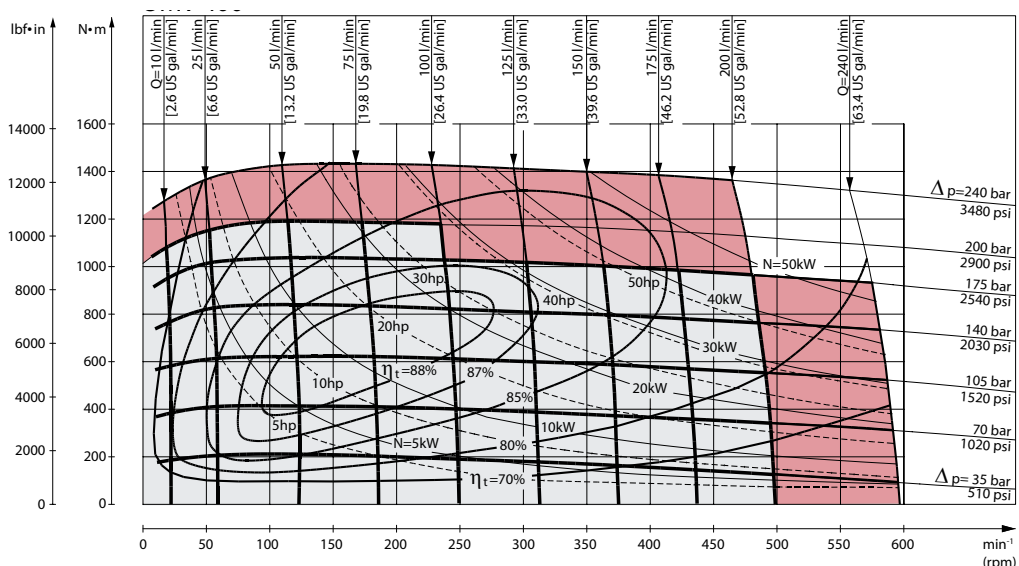
Intermittent pressure drop and oil flow must not occur simultaneously.

OMV 315 function diagram



151-870.11

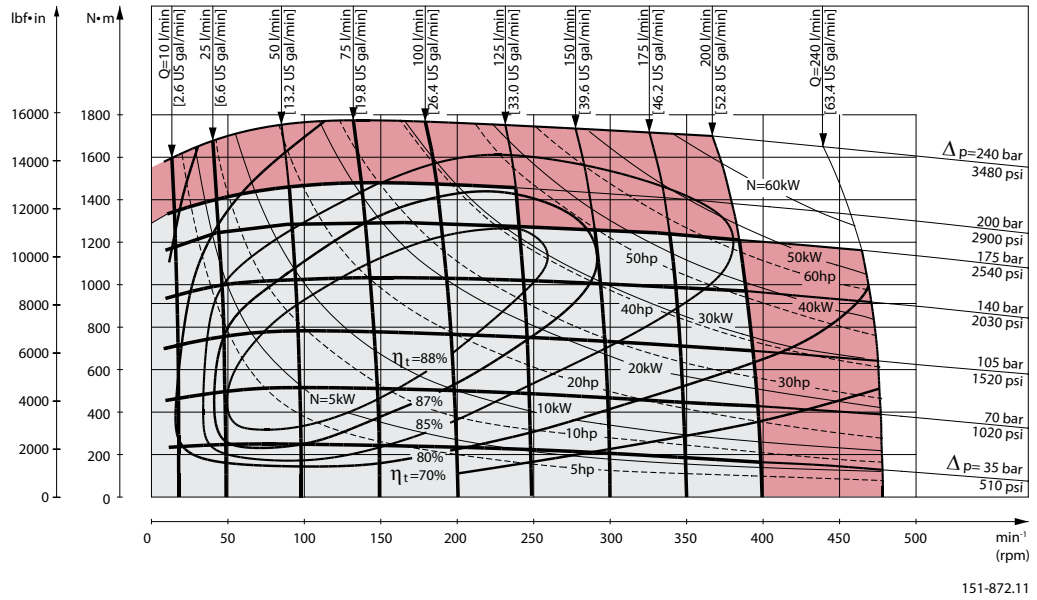
OMV 400 function diagram



151-871.11

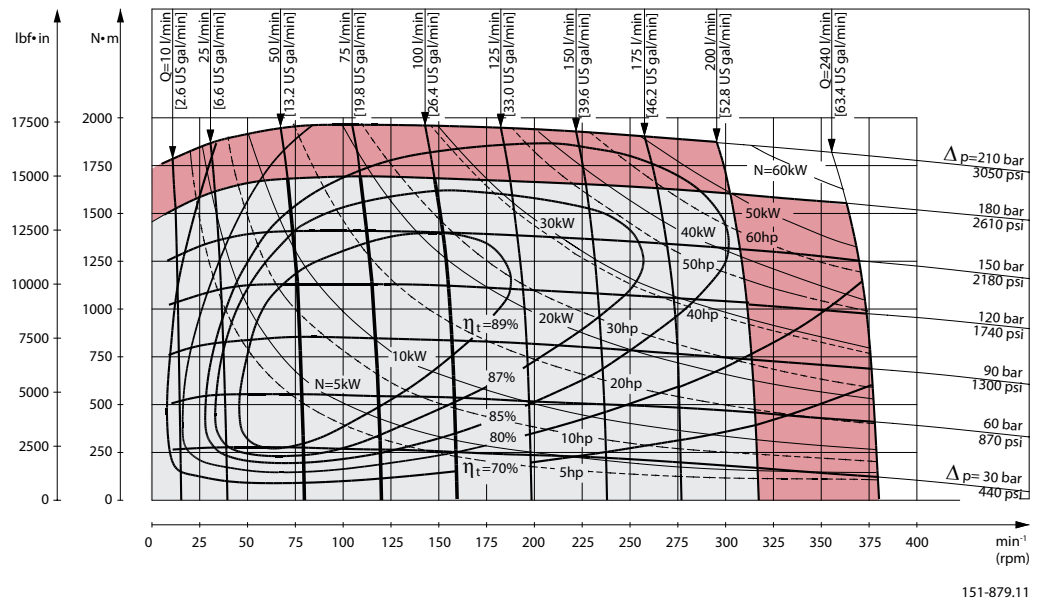
OMV function diagrams

OMV 500 function diagram



151-872.11

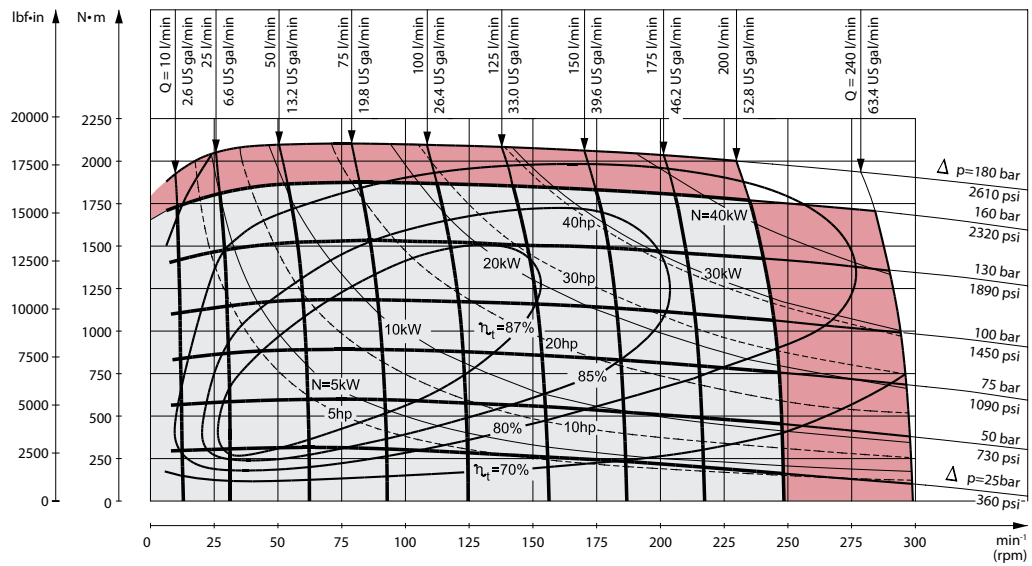
OMV 630 function diagram



151-879.11

OMV function diagrams

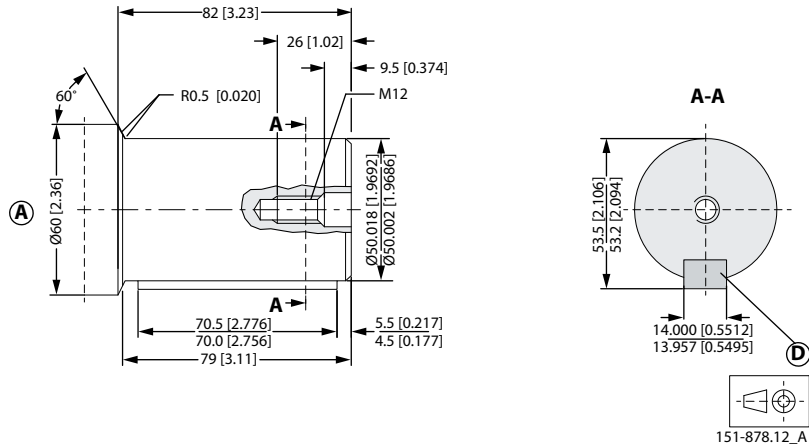
OMV 800 function diagram



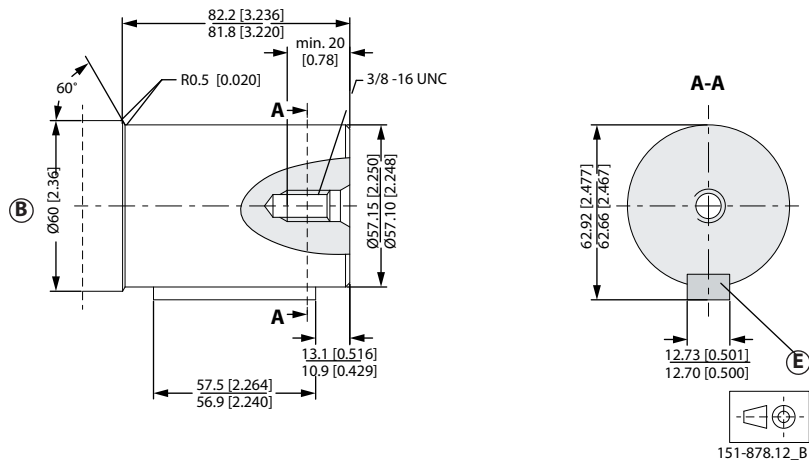
P301 250.11

Shaft version

OMV shaft version

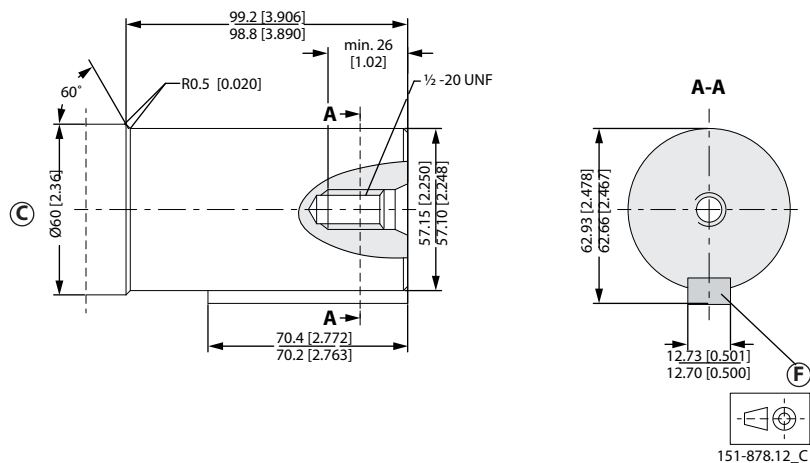


- A:** Cylindrical 50 mm shaft
- D:** Parallel key
A14 × 9 × 70; DIN 6885
Keyway deviates from standard



- B:** Cylindrical 2.25 in shaft for OMV with standard mounting flange
- E:** Parallel key
1/2 × 1/2 × 2 1/4 in; B.S. 46
Keyway deviates from standard

Shaft version

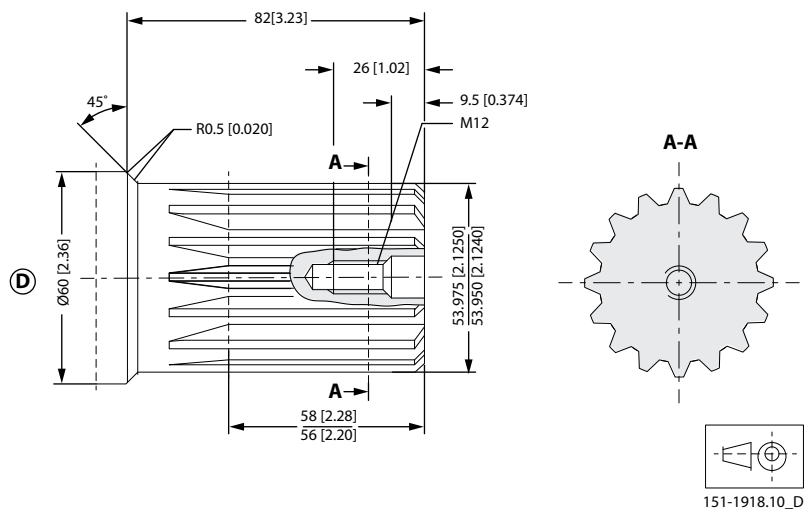


C Cylindrical 2.25 in shaft for OMV with mounting flange SAE-C

F Parallel key

1/2 × 1/2 × 2¹/₄ in; B.S. 46

Keyway deviates from standard



D: Involute splined shaft ANS B92.1 - 1996 standard

Flat root side fit

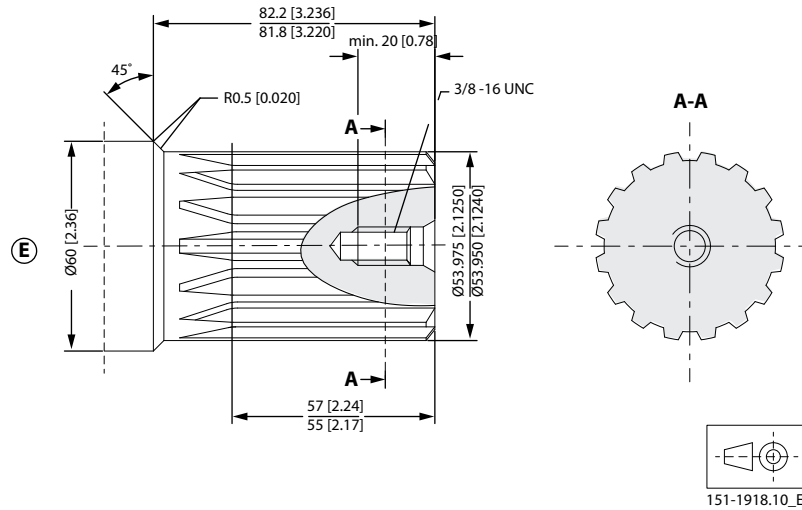
Pitch 8/16; Teeth 16

Major dia. 2.125 in

Pressure angle 30°

Shaft version

US version



E: Involute splined shaft for OMV with standard mounting flange ANS B92.1 - 1996 standard

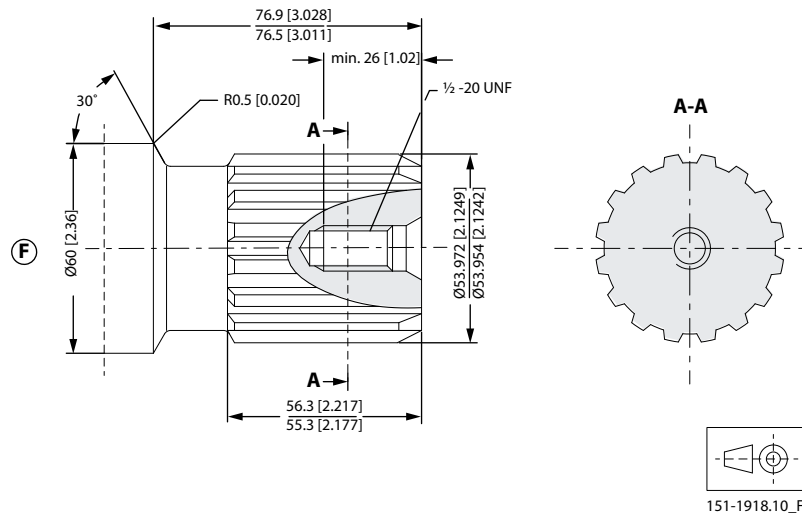
Flat root side fit

Pitch 8/16; Teeth 16

Major dia. 2.125 in

Pressure angle 30°

US version



F: Involute splined shaft for OMV with mounting flange SAE-C ANS B92.1 - 1996 standard

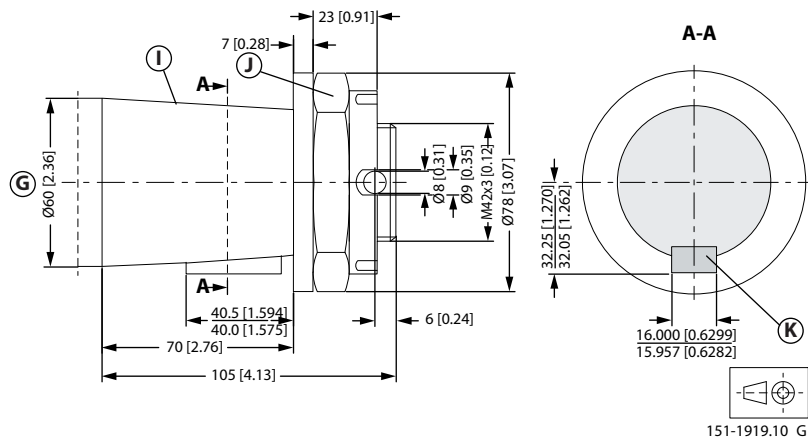
Flat root side fit

Pitch 8/16; Teeth 16

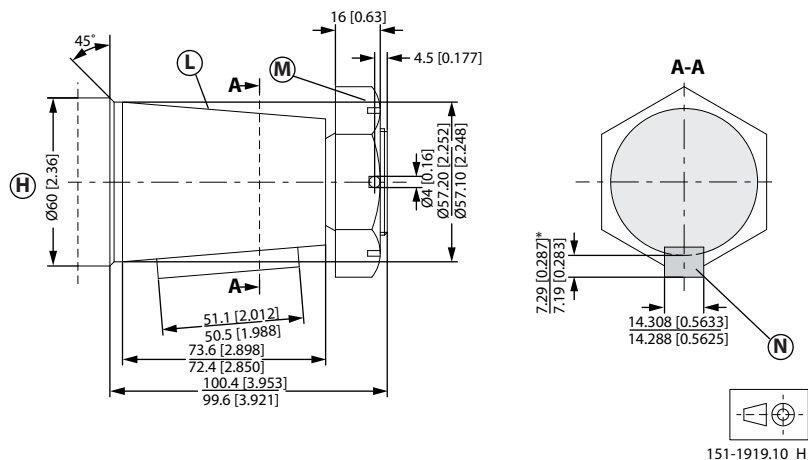
Major dia. 2.125 in

Pressure angle 30°

Shaft version



- G:** Tapered 60 mm shaft
- J:** DIN 937
 Across flats: 65 mm
 Tightening torque: 750 ±50 N•m [6640 ±440 lbf•in]
- I:** Taper 1:10
- K:** Parallel key B16 × 10 × 32
 DIN 6885
 Keyway deviates from standard



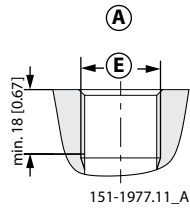
- H:** Tapered 2.25 in shaft
- L:** Cone 1:8
 SAE J501
- M:** 11/2 - 18 UNEF
 Across flats: 2 3/8 in
 Tightening torque: 750 ±50 N•m [6640 ±440 lbf•in]
- N:** Parallel key
 9/16 × 9/16 × 2 in

Shaft version

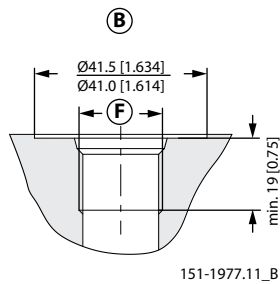
B.S. 46

Keyway deviates from standard

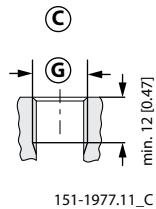
OMV port thread versions



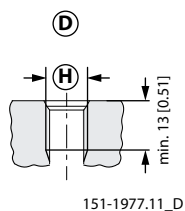
- A:** G main ports
- E:** ISO 228/1 - G1



- B:** UN main ports
- F:** 1 5/16 - 12 UN O-ring boss port



- C:** G drain port
- G:** ISO 228/1 - G1/4



- D:** UNF drain port
- H:** 9/16 - 18 UNF O-ring boss port

OMV dimensions

D: M12; 12 mm [0.47 in] deep

E: G 1; 18 mm [0.71 in] deep

Type		OMV 315	OMV 400	OMV 500	OMV 630	OMV 800
L _{Max.}	mm [in]	216 [8.50]	223 [8.78]	231 [9.09]	242 [9.53]	256 [10.08]
L ₁ *	mm [in]	22.0 [0.866]	29.0 [1.142]	37.0 [1.457]	47.5 [1.870]	61.5 [2.421]
L ₂	mm [in]	160 [6.30]	167 [6.57]	175 [6.89]	186 [7.32]	200 [7.87]
Weight	kg [lb]	31.8 [70.1]	32.6 [71.9]	33.5 [73.9]	34.9 [76.9]	36.5 [80.5]

*The gearwheel set is 3.5 mm [0.138 in] wider across the rollers than the L1 dimensions

Output shaft		Cyl. 50 mm Splined 2.125 in	Tapered 60 mm
L ₃	mm [in]	82 [3.23]	105 [4.13]

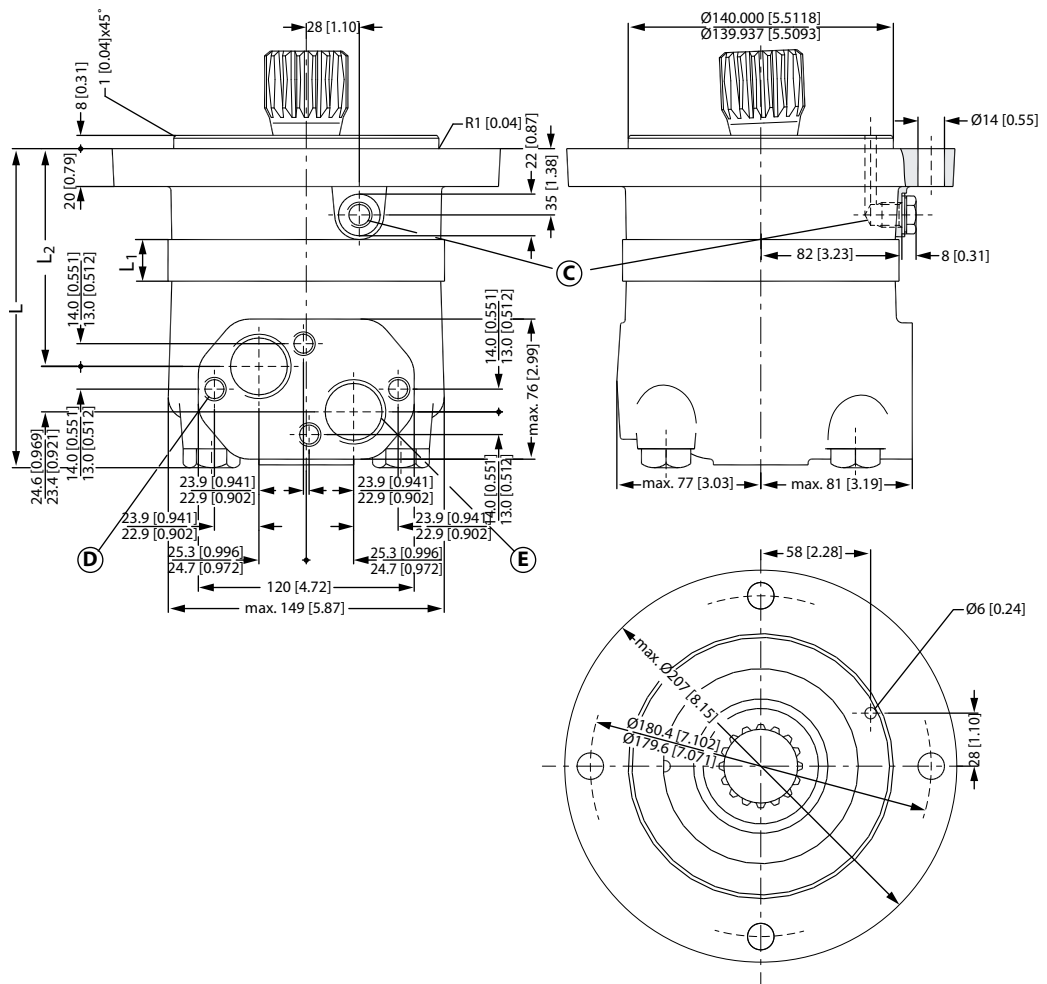
OMV dimensions

Type		OMV 315	OMV 400	OMV 500	OMV 630	OMV 800
L _{Max.}	mm [in]	148 [5.83]	155 [6.10]	163 [6.42]	174 [6.85]	188 [7.40]
L ₁ *	mm [in]	22.0 [0.866]	29.0 [1.142]	37.0 [1.457]	47.5 [1.870]	61.5 [2.421]
L ₂	mm [in]	92 [3.62]	99 [3.90]	107 [4.21]	118 [4.65]	132 [5.20]
Weight	kg [lb]	32.4 [71.4]	33.2 [73.2]	34.1 [35.5]	35.5 [78.3]	37.1 [81.8]

* The gearwheel set is 3.5 mm [0.138 in] wider across the rollers than the L₁ dimensions

Output shaft		Cyl. 50 mm	Tapered 60 mm
L ₃	mm [in]	82 [3.23]	105 [4.13]

OMV short - European version



- C:** Drain connection G 1/4; 12 mm [0.47 in] deep
- D:** M12; 12 mm [0.47 in] deep
- E:** G 1; 18 mm [0.71 in] deep



OMV dimensions

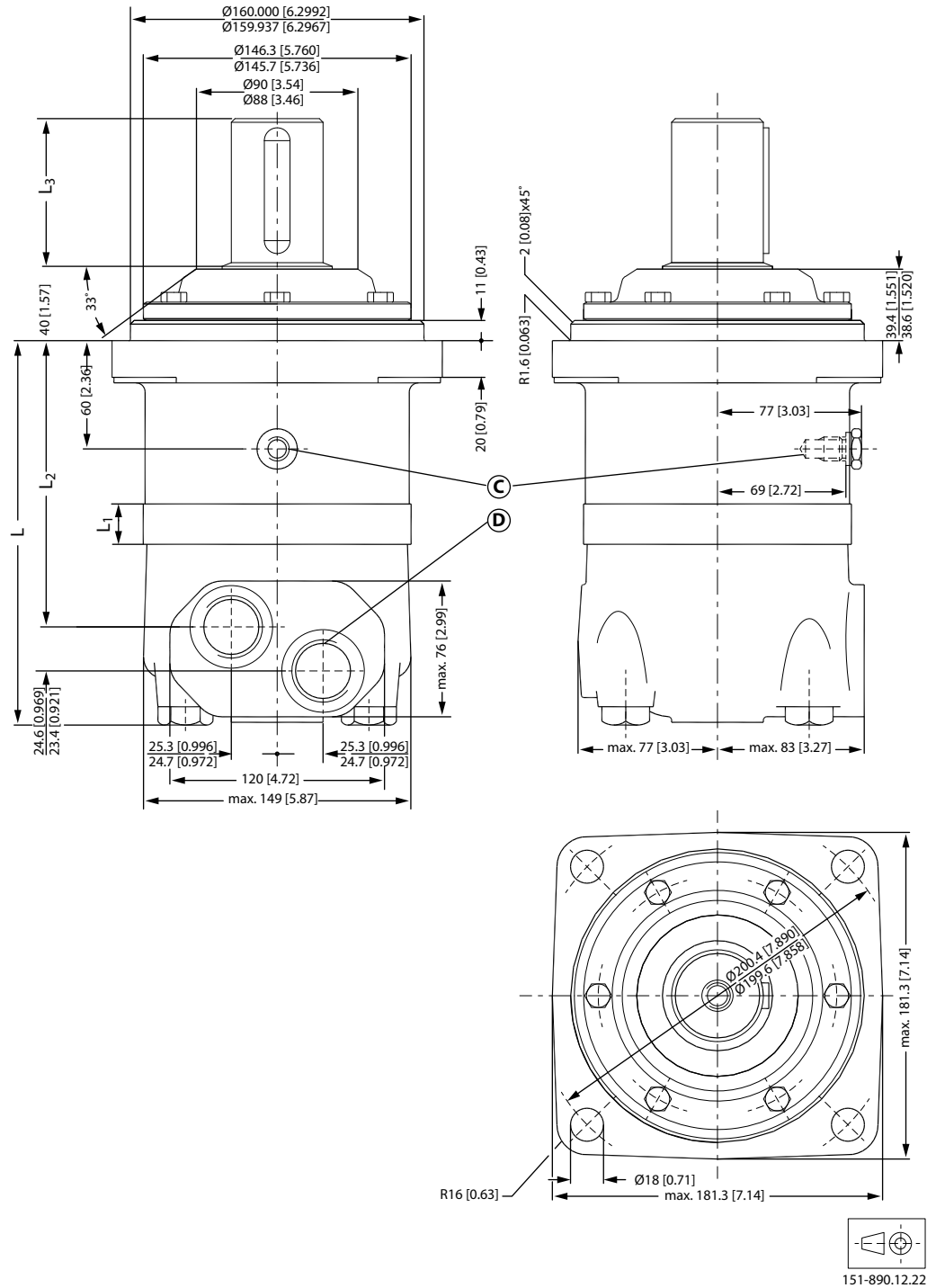
Type		OMV 315	OMV 400	OMV 500	OMV 630	OMV 800
L _{Max.}	mm [in]	173 [6.81]	180 [7.09]	188 [7.40]	199 [7.83]	213 [8.39]
L ₁ [*]	mm [in]	22.0 [0.866]	29.0 [1.142]	37.0 [1.457]	47.5 [1.870]	61.5 [2.421]
L ₂	mm [in]	117 [4.61]	124 [4.88]	132 [5.20]	143 [5.63]	157 [6.18]
Weight	kg [lb]	22.7 [50.1]	23.5 [78.3]	24.4 [53.8]	25.6 [56.4]	27.2 [61.1]

* The gearwheel set is 3.5 mm [0.138 in] wider across the rollers than the L₁ dimensions

OMV dimensions - US version

OMV dimensions

OMV standard flange - US version



C: Drain connection 9/16 - 18 UNF; 13 mm [0.51 in] deep O-ring boss port

D: 1 5/16 - 12 UN; 19 mm [0.75 in] deep O-ring boss port

OMV dimensions

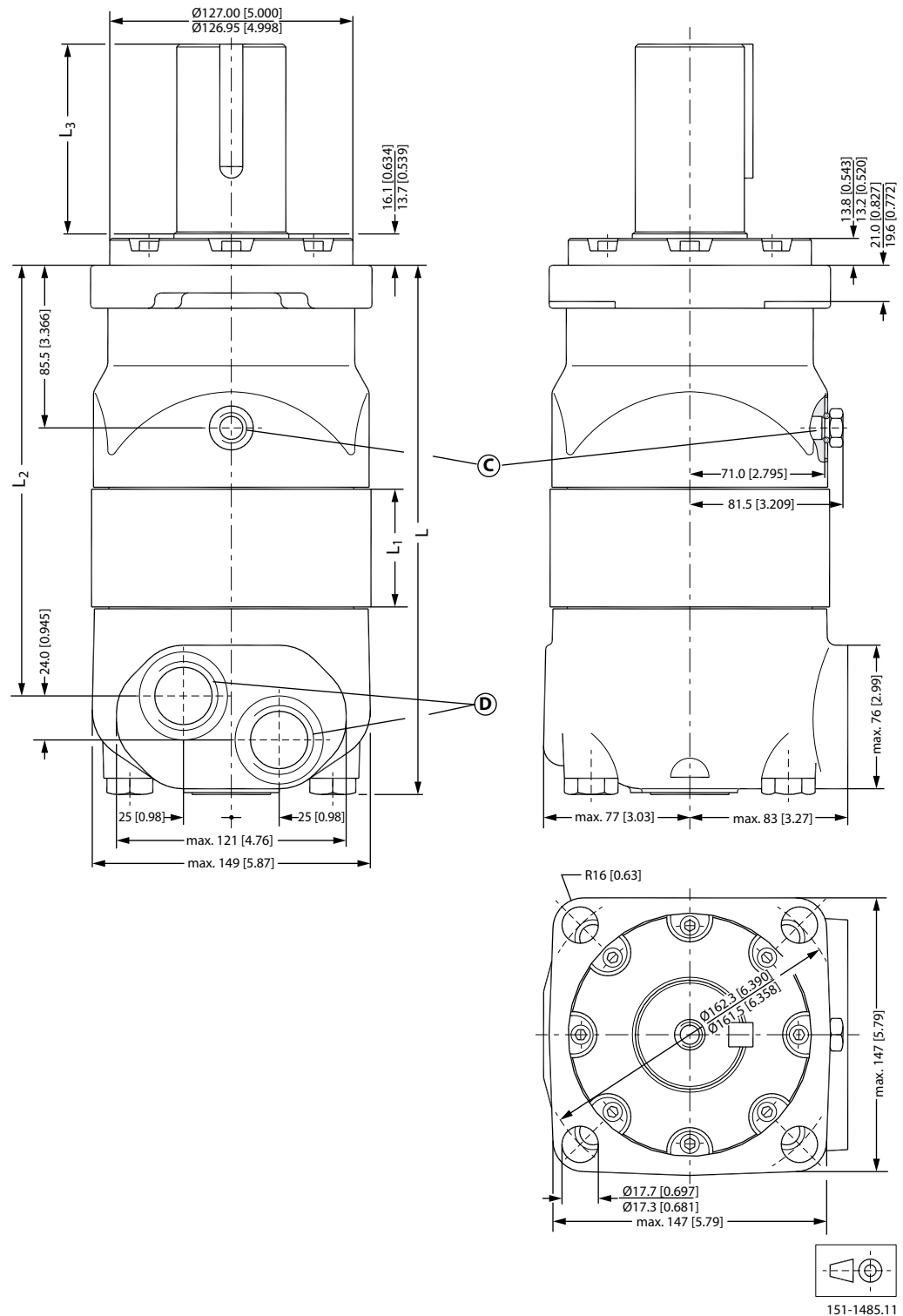
Type		OMV 315	OMV 400	OMV 500	OMV 630	OMV 800
L _{Max.}	mm [in]	216 [8.50]	223 [8.78]	231 [9.09]	242 [9.53]	256 [10.08]
L ₁ [*]	mm [in]	22.0 [0.866]	29.0 [1.142]	37.0 [1.457]	47.5 [1.870]	61.5 [2.421]
L ₂	mm [in]	160 [6.30]	167 [6.57]	175 [6.89]	186 [7.32]	200 [7.87]
Weight	kg [lb]	31.8 [70.1]	32.6 [71.9]	33.5 [73.9]	34.9 [76.9]	36.5 [80.5]

* The gearwheel set is 3.5 mm [0.138 in] wider across the rollers than the L₁ dimensions

Output shaft		Cyl. 2.25 in Splined 2.125 in	Tapered 2.25 in
L ₃	mm [in]	82 [3.23]	100 [3.94]

OMV dimensions

OMV SAE-C flange - US version



- C:** Drain connection 9/16 - 18 UNF; 13 mm [0.51 in] deep O-ring boss port
- D:** 1 5/16 - 12 UN; 19 mm [0.75 in] deep O-ring boss port

OMV dimensions

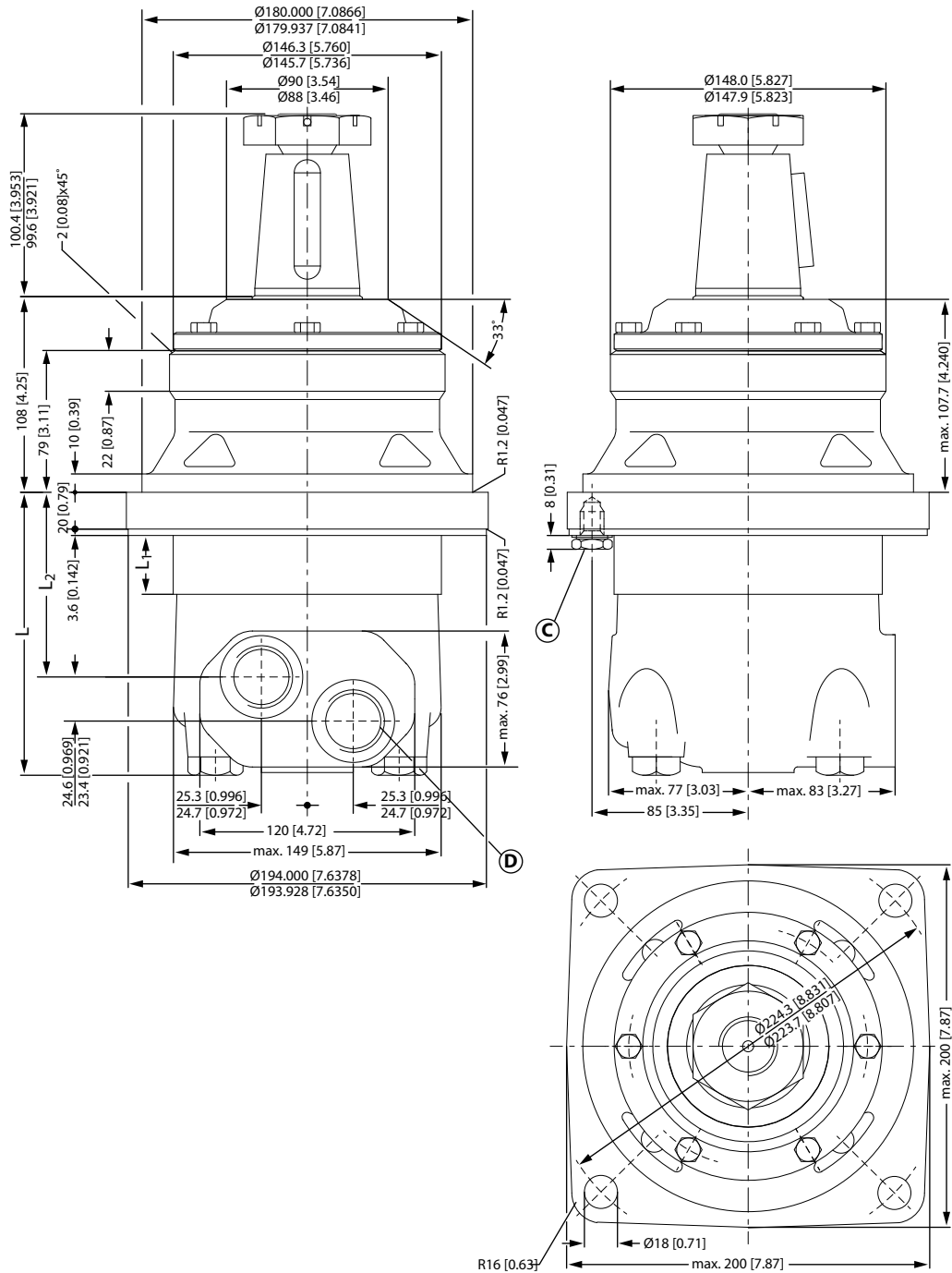
Type		OMV 315	OMV 400	OMV 500	OMV 630	OMV 800
L _{Max.}	mm [in]	240 [9.45]	247 [9.72]	255 [10.04]	266 [10.47]	280 [11.02]
L ₁ [*]	mm [in]	22.0 [0.866]	29.0 [1.142]	37.0 [1.457]	47.5 [1.870]	61.5 [2.421]
L ₂	mm [in]	185 [7.28]	192 [7.56]	200 [7.87]	211 [8.31]	225 [8.86]
Weight	kg [lb]	30.0 [66.2]	30.8 [67.9]	31.7 [69.9]	33.1 [73.0]	34.7 [76.5]

* The gearwheel set is 3.5 mm [0.138 in] wider across the rollers than the L₁ dimensions

Output shaft		Cyl. 2.25 in	Splined 2.125 in
L ₃	mm [in]	99 [3.90]	76.7 [3.02]

OMV dimensions

OMV wheel - US version



- C:** Drain connection 9/16 - 18 UNF; 13 mm [0.51 in] deep O-ring boss port
- D:** 1 5/16 - 12 UN; 19 mm [0.75 in] deep O-ring boss port

OMV dimensions

Type		OMV 315	OMV 400	OMV 500	OMV 630	OMV 800
L _{Max.}	mm [in]	148 [5.83]	155 [6.10]	163 [6.42]	174 [6.85]	188 [7.40]
L ₁ [*]	mm [in]	22.0 [0.866]	29.0 [1.142]	37.0 [1.457]	47.5 [1.870]	61.5 [2.421]
L ₂	mm [in]	92 [3.62]	99 [3.90]	107 [4.21]	118 [4.65]	132 [5.20]
Weight	kg [lb]	32.4 [71.4]	33.2 [73.2]	34.1 [35.5]	35.5 [78.3]	37.1 [81.8]

* The gearwheel set is 3.5 mm [0.138 in] wider across the rollers than the L1 dimensions