

RP 960 Series

Overview

The 960 Series is a device designed to replace existing, costly and complicated hydraulic brake release hand pumps that are present on various types of mobile equipment. It is typically used to release various types of spring applied/ hydraulically released brakes. Depending on the brake, typically 1-5 pumps of the 960 will release the brake. This enables equipment to be moved to a service area or a recharge/refuel station.

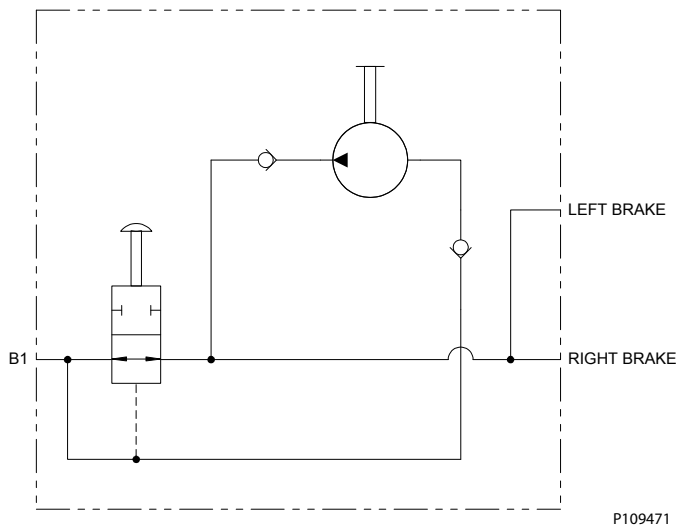
To operate, the equipment operator must depress the valve rod until it is firmly seated. The operator must then pump the pump rod until the brakes are released. If the hydraulic circuit is pressurized at any time during or after the 960 has released the brakes, the valve rod will automatically pop out and the mobile equipment will revert to its normal operation. This serves as a built in safety feature that ensures the equipment's normal braking operation is never accidentally disabled.

The 960 is a simplified product compared to competitive brands that are currently available. In addition, the product is a cost competitive alternative that offers superior performance and design flexibility.

Specifications

- Typical output flow 1cm³ [.06 in³] - 2cm³ [.12 in³] per stroke depending upon oil viscosity, speed of stroke, and pressure.
- Maximum working pressure of 276 bar [4000 psi].

Schematic



RP 960 Series

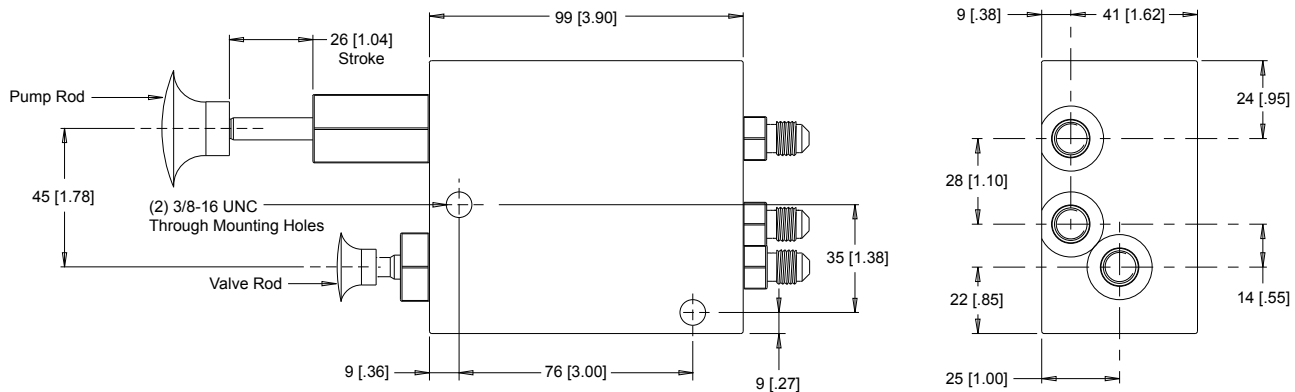
RP 960 Series Ordering Information

ORDER CODES

960020A10AAAA

960020A11AAAA

960020A12AAAA



► The 960020A10AAAA has 7/16-20 UNF Ports. The 960020A11AAAA has #4 JIC fittings pre-installed. The 960020A12AAAA has G 1/4 Ports.

P109472